

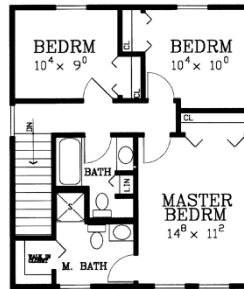
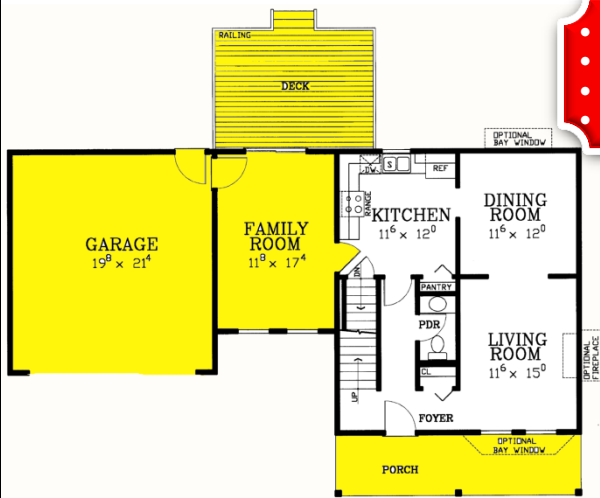
Mt. Airy

84 Affordable HOMES

- 124.86 m²
- 3 bedrooms
- 2 1/2 baths



- Optional Front Porch
- Optional 2 Car Garage
- Optional Family Room
- Optional Deck



Specifications

Living Area:	124.86 m ²
House width:	7.32 m
House depth:	8.53 m
Number of stories:	2
Primary roof pitch:	10:12
Roof framing:	Truss
Optional porch:	13.38 m ²
Optional deck:	17.83 m ²
Optional Garage:	40.88 m ²
Main ceiling height:	2.44 m

Optional Enhancements

- ◆ Two car garage
- ◆ Front porch with railing
- ◆ Rear deck with railing
- ◆ Family room
- ◆ Box bay window
- ◆ angle bay window
- ◆ Fireplace



84 LUMBER **THE PROJECT PROFESSIONALS**